

Hydraulic Rescue Tools

China Earthquake / Fire Fighting / Coal Mine Rescue Tools Top Supply

GYKZ-63-42/650-A Hydraulic Rescue Spreader

Product Feature:

[Hydraulic rescue tools](#) are used by emergency rescue personnel to assist vehicle extrication of crash victims, as well as other rescues from small spaces. They are popularly referred to in the United States, Canada, Australia and many other emergency rescue places.

Hydraulic rescue tools are powered by a hydraulic pump, which can be hand, foot, or engine-powered or even built into the tool itself. These tools either single-acting, where hydraulic pressure will only move the cylinder in one direction, and the return to starting position is accomplished using a pressure-relief valve and spring setup, or dual-acting, in which hydraulic pressure is used to both open and close the hydraulic cylinder.



A [Hydraulic rescue spreader](#) is a hydraulic tool designed with 2 arms which come together in a narrow tip, and which uses hydraulic pressure to separate or spread the arms. The tip of the tool can be inserted into a narrow gap between two vehicle panels (such as between 2 doors, or between a door and a fender) - when the tool is operated, the arms are opened, pushing apart the metal in the panels. Spreaders may also be used to "pop" vehicle doors from their hinges.



| Items | Parameters |
|--|---------------|
| Max. Spreading Distance | ≥650 mm |
| Rated Working Pressure | 63Mpa |
| Rated Tension | 42 KN |
| Max. Tension | 120 KN |
| Opening Time without Load(Oil is Supplied by Motored Pump) | ≤30 s |
| Closing Time without Load(Oil is Supplied by Motored Pump) | ≤25 s |
| Weight(Working Mode) | ≤19 kg |
| Size: Length× Width× Height | 730×230×190mm |

GYJQ-63-28/220-A Hydraulic Rescue Cutter

Product Feature:

Hydraulic rescue tools are used by emergency rescue personnel to assist vehicle extrication of crash victims, as well as other rescues from small spaces. They are popularly referred to in the United States, Canada, Australia and many other emergency rescue places.

Hydraulic rescue tools are powered by a hydraulic pump, which can be hand, foot, or engine-powered or even built into the tool itself. These tools either single-acting, where hydraulic pressure will only move the cylinder in one direction, and the return to starting position is accomplished using a pressure-relief valve and spring setup, or dual-acting, in which hydraulic pressure is used to both open and close the hydraulic cylinder.



The cutter is a hydraulic tool which is designed to cut through metal - a hydraulically powered shears. The cutter is a hydraulic tool which is designed to cut through metal - a hydraulically powered shears. It is often called a crab-cutter, owing to the shape and configuration of its blades. Sometimes specified as to its capacity to cut a solid circular steel bar, these are most commonly used to cut through a vehicle's structure in an extrication operation. Cutter blades are replaceable, and blade development progresses as vehicle technology progresses in order to be able to cope with the new car protection technology.



| Items | Parameters |
|--|---------------------|
| Max. Opening Distance of Shears Heads | ≥220 mm |
| Rated Working Pressure | 63Mpa |
| Max. Shear Capability(Q235 materials) | φ28 mm(Steel Plate) |
| Opening Time without Load(Oil is Supplied by Motored Pump) | ≤25 s |
| Closing Time without Load(Oil is Supplied by Motored Pump) | ≤30 s |
| Weight(Working Mode) | ≤13 kg |
| Size: Length× Width× Height | 700×210×165mm |

GYKZ-63-42/650-A Hydraulic Rescue Pliers

Product Detail:

Hydraulic rescue tools are used by emergency rescue personnel to assist vehicle extrication of crash victims, as well as other rescues from small spaces. These tools include cutters, spreaders, and rams.

The tools operate on the basis of hydraulic fluid pressure of up to 720 bar, which must be provided from a power source. At present, there are 3 different means of generating the pressure. The most commonly used source is a separate power unit, which is a small petrol (gasoline) engine connected to a hydraulic pump.

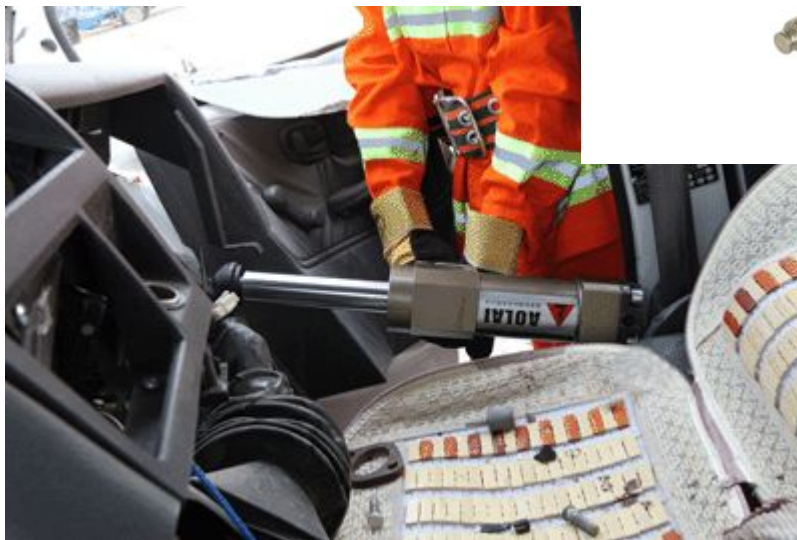


| | |
|---------------------------------------|--------------------|
| Size: Length× Width× Height | 760×210×170mm |
| Max. Opening Distance of Shears Heads | ≥350 mm |
| Rated Working Pressure | 63Mpa |
| Max. Shear Capability | 15 mm(Steel Plate) |
| (Q235 materials) | φ28mm(Round Steel) |
| Rated Tension | 32 KN |
| Weight | ≤14 kg |

GYCD-63-110/525-A Hydraulic Ram

Application:

GYCD-63-110/525-A Hydraulic Ram with 63Mpa working pressure, 110KN Maximum Extending Force, less than 350mm Closing Length, Working Scope from 350mm to 1080mm.



| Items | Parameters |
|----------------------------------|----------------|
| Working Pressure | 63Mpa |
| Maximum Extending Force | 110 KN |
| Closing Length | ≤350 mm |
| Distance | 180 mm |
| Length of Extension Bar I/II/III | 100/175/275 mm |
| Working Scope | 350-1080mm |
| Weight | ≤10 kg |
| Size: Length× Width× Height | 350×260×90mm |

BJQ-2-63/0.6-A High Pressure Electrical Pumps

Main Technical Index:

BJQ-2-63/0.6-A Super High Pressure Electrical Pumps used for Hydraulic Rescue Tools, Such as hydraulic rescue spreader, rescue pliers and rescue cutter.



| Items | Parameters |
|---|---|
| Driving Force | Honda GX100 Gasoline Engine |
| Oil Pump/Output | Double-acting Piston Double-output Pump |
| Rated Output Pressure(High Pressure) Mpa | 63 |
| Rated Output/Flow-L/min-L/min | 0.6 |
| Pressure of Low-Pressure Output(Switching Pressure) Mpa | ≥10 |
| Low-Pressure Output/Speed-L/min-L/min | 2 |
| Weight(Operating Mode, excl. Oil tubes) | ≤30 |
| Size: Length× Width× Height | 390×340×460mm |

Quick Links:

<http://www.fivestar-tools.com/Other-hydraulic-tools/>